

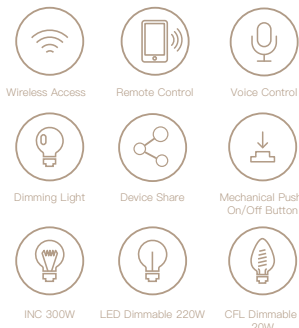
Smart Dimmer Switch



WORKS WITH Google Assistant

WORKS WITH Amazon Alexa

Features

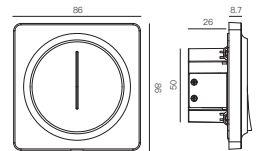


Product Introduction

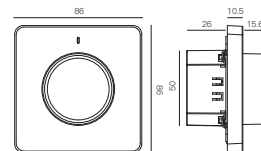
- Excellent design and high-quality materials to ensure long-term stable and reliable service to users
- Optimized dimming algorithms maximize the compatibility of lights and does not flicker at any brightness
- Stepless touch/rotation dimming makes the brightness adjustment easy and smooth
- Silent mechanical push button design provide the user's best feedback

Specification

Input Power:	220V AC 50Hz
Inductive load (LED/CFL):	220W Max
Resistive load (Incandescent):	300W Max
Control Channel:	1 CH
Standby Power:	<0.5W
Working Temperature:	-10°C-45°C
Working Humidity:	<90%

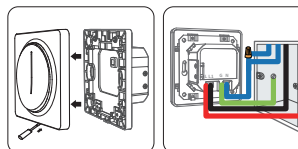


(Smart Touch Dimmer Switch)

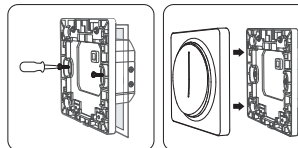


(Smart Rotary Dimmer Switch)

Installation (Smart Touch Dimmer Switch)

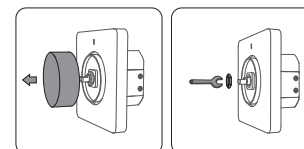


1. Pull out the panel;
2. Wires connecting

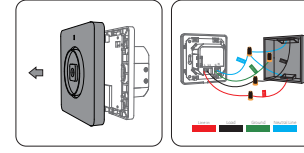


3. Screw the dimmer into the back box.
4. Mount switch cover panel completed installation.

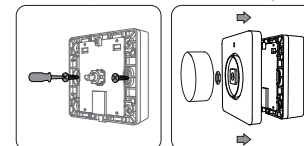
Installation (Smart Rotary Dimmer Switch)



1. Pull out the knob;
2. Remove nuts and gaskets;

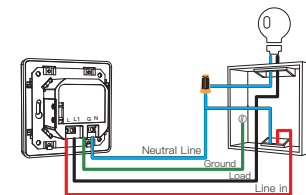


3. Pull out the panel;
4. Wires connecting



5. Screw the dimmer into the back box.
6. Mount switch cover panel completed installation.

Installation

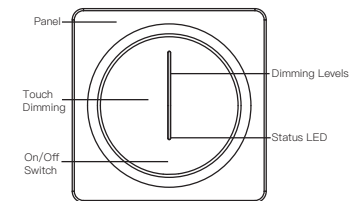


1. Disconnect power by circuit breaker;
2. Check the Line with voltage tester pen, make sure the power is off to prevent electric shock;
3. Follow the wiring instructions, connect the dimmer wires to each other leads and check for short circuits;
4. Screw the dimmer into the back box;
5. Mount switch cover panel;
6. Connect circuit breaker restore power.

Note: Please be careful when installing, do not damage the circuit board and components.

The color of the wires may be different from the instructions in the manual, please have a qualified person to complete the installation.

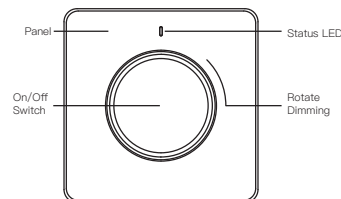
Connection & Operation



(Smart Touch Dimmer Switch)

1. Once connect power correctly, the White led on the bottom of dimmer will turn on, dimmer switch is ready to serve.
2. Push on/off button to turn on/off the light.
3. When the light is on, the user can sliding touch the control panel adjust the brightness of the light, and the status indicator on the panel will change at the same time.

Connection & Operation



(Smart Rotary Dimmer Switch)

1. Once connect power correctly, turn on circuit breaker, the green LED on the dimmer will turn on, dimmer switch is ready to serve.
2. Push the knob button to turn on/off the light. When dimmer is on, indicator turns white. When dimmer is off, indicator turns green.
3. Rotate the knob to adjust the brightness, counterclockwise to turn down the brightness, and clockwise to turn up the brightness.

AP setup Mode

The AP setting mode is mainly applicable to situations where the network environment is poor, such as multiple network interference or low signal quality.

1. In the smart setting mode, the wifi indicator flashes quickly, please press and hold the switch for 5 seconds to enter the AP setup mode, LED will flash slowly.
2. Open Smartlife APP and search WiFi SSID "Smartlife-XXXX", then connect to the device, wait until the progress to complete, it takes up to 2min.
3. After completing the above process, the device will automatically connect to the router.

Reset / Re-pair the product

Press and hold ON/OFF button for 5second then release, the indicator will flash, dimmer get into setup mode, please follow setup instruction to complete setup to start smart function.

Note: Hub required for ZigBee and Bluetooth version switch

APP Operation

1. Scan QR code and download the app iOS or Android version



APP Operation

1. Register and login

The user needs to register the user first, and can use the mobile phone number to register.

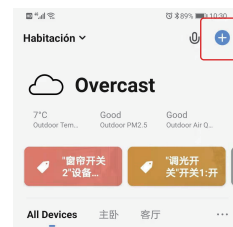
Once you are done, you can use this username to log in to the APP and proceed to the next step.

*Support some third-party accounts are directly logged in.

Note:If what you choose is the ZigBee or Bluetooth version, then a ZigBee or Bluetooth hub is required for connection first before successful pairing.

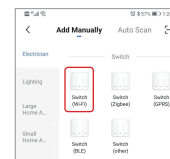
2. Add Devices

After the user logs in, click the "+" icon in the upper right corner of the main page to enter the add device interface, select the "Switch" menu and click the switch device icon.



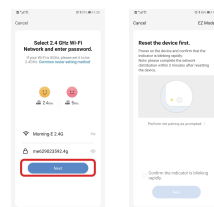
APP Operation

Note:Please choose the right type referring to ZigBee/Bluetooth/WiFi version in the APP device list.



3. Add Devices

To ensure that the new dimmer power LED is flashing, select the Wi-Fi and enter the password then click OK.

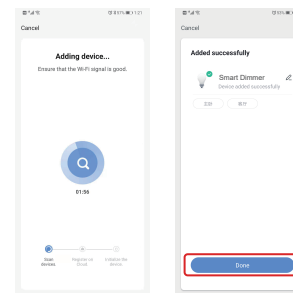


APP Operation

4. Add Devices

Wait system to search the device, connect and configure the device will takes up to 3min.

Once the device configure successfully, please also input preferred name and select location.



APP Operation

Remark:

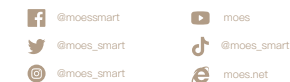
1. Smart phone and device must connect to same Wi-Fi during setup mode;
 2. The device must be added to the account before it can be controlled remotely;
 3. After the device is successfully accessed, other users can obtain control of the product through the sharing function.
- Troubleshooting
1. Can not connect to Wi-Fi router
 - a) Also make sure you have good Wi-Fi signal strength at the location of the dimmer
 - b) Metal box and metal surface - wall board may block Wi-Fi signal
 - c) Make sure input correct Wi-Fi password
 - d) The Dimmer only support 802.11 b/g/n 2.4GHz Wi-Fi signal, 5GHz NOT support

Thank you for your support and purchase at we Moes,we are always here for your complete satisfaction,just feel free to share your great shopping experience with us.



If you have any other need,please do not hesitate to contact us first,we will try to meet your demand.

FOLLOW US



WENZHOU NOVA NEW ENERGY CO.,LTD
Address: Power Science and Technology Innovation Center, NO.238, Wei 11 Road, Yueqing Economic Development Zone, Yueqing, Zhejiang, China
Tel:+86-577-57186815
Email:service@moeshouse.com
AMZLAB GmbH
Laubenhof 23, 45326 Essen
Made In China